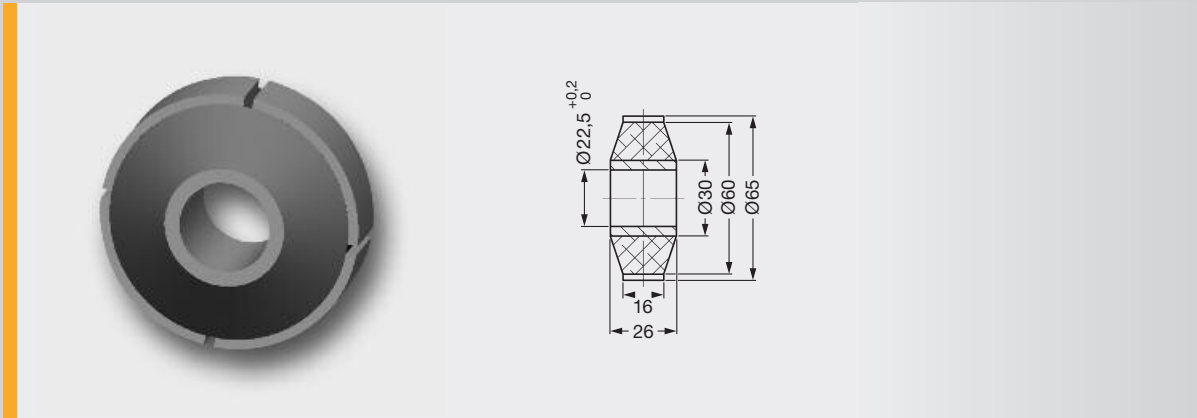


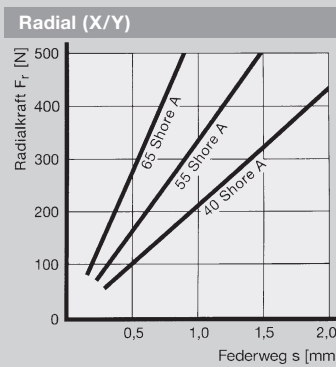
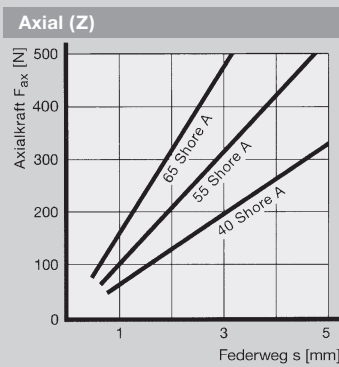
SCHWINGMETALL® Torsionselemente



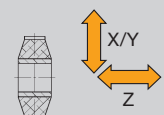
Federsteifigkeiten			max. Belastungen			Masse Stück [kg]	Elastomer Härte [Shore A]	Form-Nr.	Artikel-Nr.
C _x [N/mm]	C _y [N/mm]	C _z [N/mm]	F _x [N]	F _y [N]	F _z [N]				
217	217	66	450	450	330	0,168	40	21489	3926402000
333	333	104	600	600	500	0,168	55	21489	3926202000
540	540	156	700	700	600	0,168	65	21489	3926102000

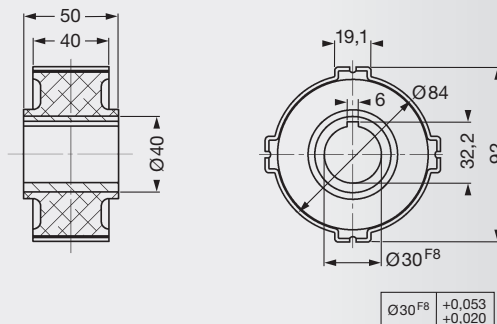
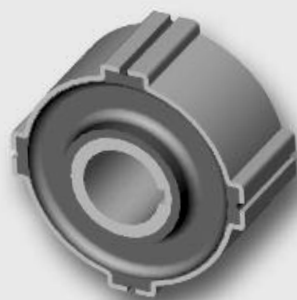
- ▶ Außenring vierteilig,
Schlitzbreite 1,5 mm
Einbaumaß Ø 64 mm
- ▶ Hauptbelastungsrichtung Radial,
statische axiale Lasten unzulässig

Kennlinien Form-Nr. 21489



Belastungsrichtungen





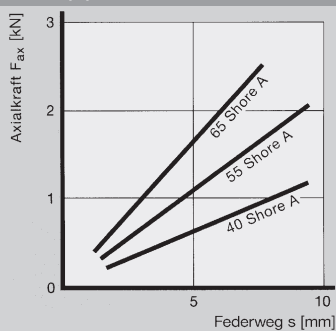
Torsionsbuchse

Federsteifigkeiten			max. Belastungen			Masse Stück [kg]	Elastomer Härte [Shore A]	Form-Nr.	Artikel-Nr.
C_x [N/mm]	C_y [N/mm]	C_z [N/mm]	F_x [N]	F_y [N]	F_z [N]				
554	554	124	1100	1100	950	0,53	40	27843a	3926404000
990	990	207	1750	1750	1650	0,53	55	27843a	3926204000
1652	1652	326	1800	1800	2200	0,53	65	27843a	3926104000

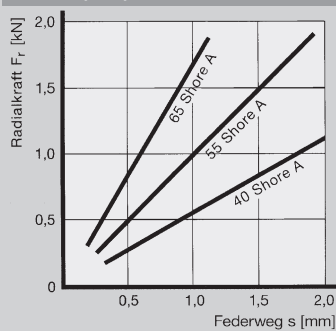
- ▶ Außenring vierteilig, Schlitzbreite 1,2 mm
Einbaumaß Ø 83 mm
- ▶ Hauptbelastungsrichtung Radial, statische axiale Lasten unzulässig

Kennlinien Form-Nr. 27843a

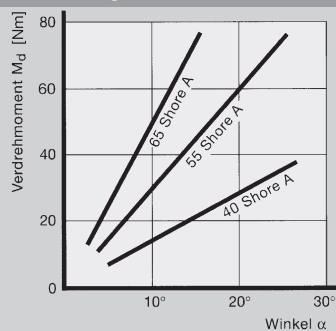
Axial (Z)



Radial (X/Y)



Verdrehung



Belastungsrichtungen

