

Adjustable, Compression and extension force 30 N to 3,000 N

End Fitting

Standard Dimensions

End Fitting

A8



Eye A8  
max. force 3,000 N

B8



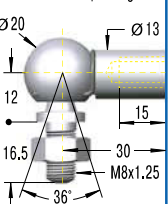
Performance and Dimensions

TYPES	Stroke mm	L extended mm	1 Compression force max. N
HB-28-100	100	260	3,000
HB-28-150	150	360	3,000
HB-28-200	200	460	3,000
HB-28-250	250	560	3,000
HB-28-300	300	660	2,500
HB-28-350	350	760	2,000
HB-28-400	400	860	1,500
HB-28-500	500	1,060	1,000

1 Max. extension force for all stroke lengths 3,000 N.

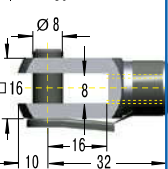
Stud Thread B8

C8



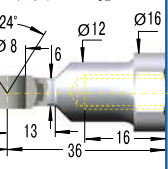
Angle Ball Joint C8  
max. force 1,200 N

D8



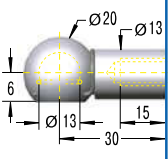
Clevis Fork D8  
max. force 3,000 N

E8



Swivel Eye E8  
max. force 3,000 N

G8



Ball Socket G8  
max. force 1,200 N

Ordering Example

Type (Hydraulic Damper) \_\_\_\_\_  
 Body Ø (28 mm) \_\_\_\_\_  
 Stroke (150 mm) \_\_\_\_\_  
 Piston Rod End Fitting D8 \_\_\_\_\_  
 Body End Fitting D8 \_\_\_\_\_  
 Damping Direction (M = out stroke only) \_\_\_\_\_

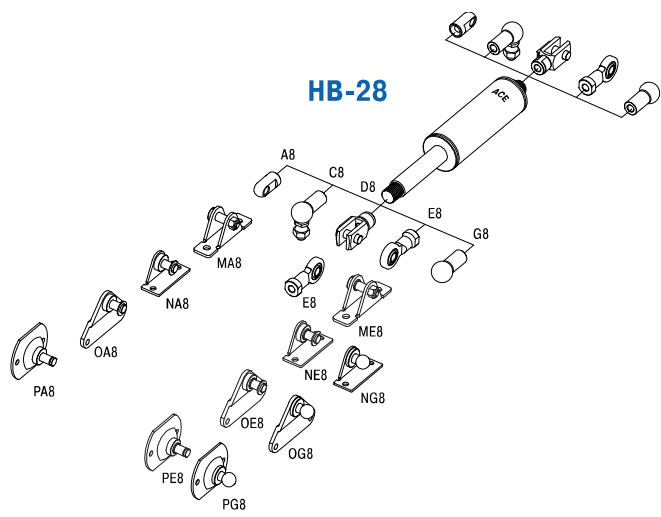
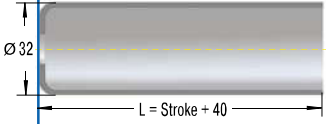
**HB-28-150-DD-M**

Model Type Prefix

- P: Damping in both directions
- N: Damping on in stroke only
- M: Damping on out stroke only
- X: Special model suffix

Mounting accessories see from page 200.

Rod Shroud W8-28



Technical Data

- Compression and extension force:** 30 N to 3,000 N
- Free travel:** Construction of the damper results in a free travel of approx. 20 % of stroke.
- Separator piston:** Extension force 80 N; dimension L = 2.35 x stroke + 60 mm. Part number: add suffix -T.
- Operating temperature range:** -20 °C to +80 °C
- Adjustment:** Achieved by turning the piston rod in its fully extended or fully compressed position.  
Clockwise rotation = increase of the damping  
Anti-clockwise rotation = decrease of the damping  
Damping force adjustable before installation. Adjustment can add a max. of 6 mm to the L dimension.
- Positive stop:** External positive stops 1 mm to 1.5 mm before the end of stroke provided by the customer.
- Material:** Outer body: coated steel; Piston rod: steel with wear-resistant coating; End fittings: zinc plated steel
- Mounting:** in any position
- Note:** Increased break-away force if unit has not moved for some time.
- End fittings:** They are interchangeable and if necessary must be positively secured by the customer to prevent unscrewing.

Issue 07.2017 – Specifications subject to change