

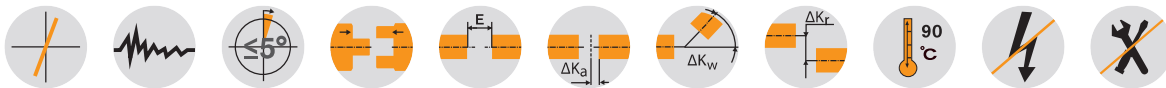
ROTEX® GS expansion hubs

Backlash-free jaw couplings

Clamping system for hollow shaft connection



For legend of pictogram please refer to flapper on the cover



ROTEX® GS expansion hub - Expansion hub material aluminium/clamp pin material stainless steel

Size	Spider GS ²⁾ torque T _{KN} [Nm]					Dimensions [mm]											
	80 ShA	92 ShA	98 ShA	64 ShD	72 ShD	D ₁ ³⁾	D ₂	D _H	l ₁ ³⁾	l ₂ ¹⁾	l ₄ ³⁾	l ₅ ³⁾	l ₆	L ¹⁾	E	b	s
9	1.8	3.0	5.0	6.0	-	10	-	20	20	10	11	-	0	40	10	8	1.0
12	3.0	5.0	9.0	12.0	-	10	20	25	19	11	14	1.5	2	42	12	10	1.0
14	4.0	7.5	12.5	16.0	-	12	24	30	18.5	11	12.5	3	2	42.5	13	10	1.5
19	6.0	12.0	21.0	26.0	-	20	35	40	28	25	20	1	0	69	16	12	2.0
24	-	35	60	75	97	25	45	55	38	30	30	1	4	86	18	14	2.0
28	-	95	160	200	260	35	55	65	44	35	36	1	5	99	20	15	2.5

¹⁾ For selections see page 22 et seqq/other spiders see page 123 and following

Review of shaft-hub-connection: Friction torques T_R [Nm] for hub design 9.0*

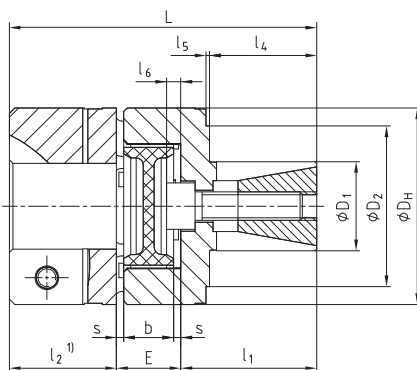
Size	D ₁ ³⁾	D ₂	l ₁ ³⁾	l ₄ ³⁾	l ₅ ³⁾	Friction torque [Nm]
9	10	-	20	11	-	6.4
12	10	20	19	14	1.5	7.7
14	12	24	18.5	12.5	3	7.7
19	20	35	28	20	1	35.7
24	25	45	38	30	1	82
28	35	55	44	36	1	182

²⁾ The expansion hub can be combined with other types of hubs to form the opposite side, too. l₂ depends on the hub design. For further types of hubs see page 128.

³⁾ Dimensions D₁, l₁, l₄ and l₅ are examples. Other dimensions on customers' request.

* The transmittable torques of the clamping connection consider the dimensions D₁, D₂, l₄ and l₅ as specified with steel being the material of the hollow shaft.

ROTEX® GS expansion hub type 9.0 with clamping hub ¹⁾

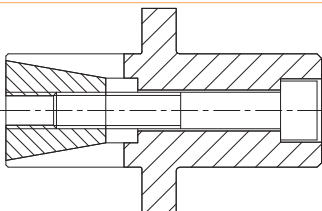


ROTEX® GS expansion hub for axis of belt

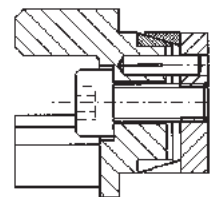


Special types for hollow shaft connections

Shaft extension



ROTEX® GS hub with CLAMPEX® KTR 150



Ordering example:

ROTEX® GS 24	98 ShA-GS	d 20	9.0 - Ø24	2.5 - Ø20
Coupling size	Spider hardness	Optional: Bore in spider	Hub design	Finish bore
			Hub design	Finish bore