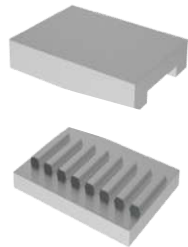


The table below is an overview about our available tension plate variants according to the different belt types.

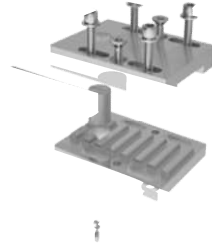
BRECO®-fix Tension plates							
Pitch	Belt type	Belt widths					
		25	32	50	75	100	150
5 mm	T5	Variant A Type 1/2/3	Variant A Type 1/2/3	Variant A Type 1/2/3	-	-	-
	AT5 / ATL5	Variant A Type 1/2/3	Variant A Type 1/2/3	Variant A Type 1/2/3	-	-	-
10 mm	T10	Variant A Type 1/2/3	Variant A Type 1/2/3	Variant A Type 1/2/3	-	-	-
	AT10	Variant A Type 1/2/3	Variant A Type 1/2/3	Variant A Type 1/2/3	Variant B Type 2	Variant B Type 2	Variant C
	BATK10	-	Variant A Type 1/2/3	Variant A Type 1/2/3	Variant B Type 2	Variant B Type 2	-
	ATL10	Variant A Type 1/2/3	Variant A Type 1/2/3	Variant B Type 1	Variant B Type 2	Variant B Type 2	-
15 mm	ATS15	-	-	Variant B Type 1	Variant B Type 2	Variant B Type 2	Variant C
	BATK15	-	-	Variant B Type 1	Variant B Type 2	Variant B Type 2	-
20 mm	T20	-	-	Variant B Type 1	Variant B Type 2	Variant B Type 2	Variant C
	AT20	-	-	Variant B Type 1	Variant B Type 2	Variant B Type 2	Variant C
	ATL20	-	-	Variant B Type 1	Variant B Type 2	Variant B Type 2	-

BRECO®-fix Tension plate



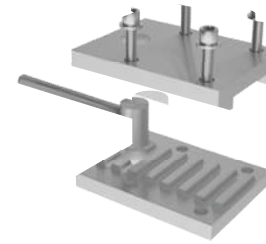
Variant A type 1  
Without bores and tensioning device

BRECO®-fix Tension plate



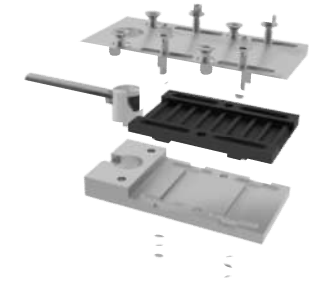
Variant A type 2  
With bores, long holes and tensioning device

BRECO®-fix Tension plate



Variant A type 3  
With tensioning device, threaded holes in the upper plate  
and screw thread in the bottom plate

BRECO®-fix Tension plate



Variant B type 1  
With tensioning device, bores, long holes and toothed insert

**Remark:**

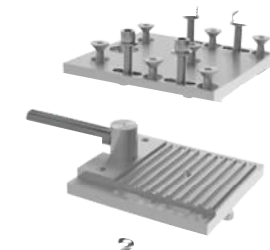
Variant „B“ and „C“ are also available without tensioning device. If you don't need it, please make a note in the order code.

BRECO®-fix Tension plate

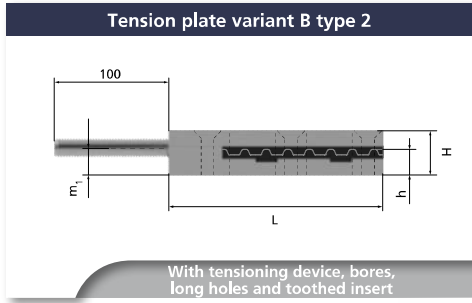


Variant B type 2  
With tensioning device, bores, long holes and  
toothed insert

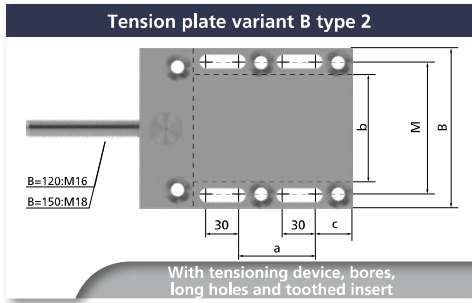
BRECO®-fix Tension plate



Variant C  
With tensioning device, bores, long holes



With tensioning device, bores, long holes and toothed insert



With tensioning device, bores, long holes and toothed insert

Mounting instructions

Tension plate	Variant B type 2	
Belt width	75 mm	100 mm
Pre-assembly screws (SW=wrench size across flats)	Countersunk head screws ISO 10642, 6xM10 - 8.8 (SW6)	Countersunk head screws ISO 10642, 6xM12 - 8.8 (SW8)
Recommended tightening moment of the pre-assembly screws $M_A$	18 Nm	28 Nm
Fastening screws	Cheese head screws ISO 4762 4xM10 - 8.8 (SW8)	Cheese head screws ISO 4762 4xM12 - 8.8 (SW10)
Recommended tightening moment of the fastening screws $M_A$	45 Nm	70 Nm
Tightening moment for generation of tension force $M_A$	64 Nm on Countersunk head screws	114 Nm on Countersunk head screws
Admissible force of the tension plates $F_{adm}$	95200 N	126000 N

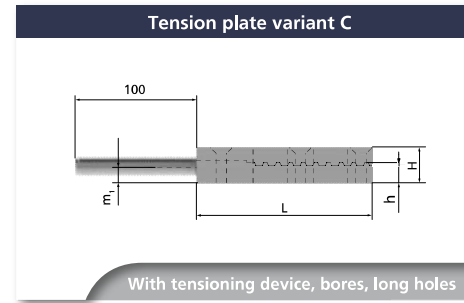
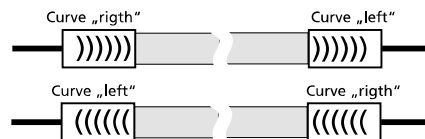
BRECO order example

**Tension plate** 120 x 180 BATAK15 Var B Type 2 left  
 Width B  
 Length L  
 Belt type / pitch  
 Variant  
 Type  
 Curve direction (only BATAK10, BATAK15)

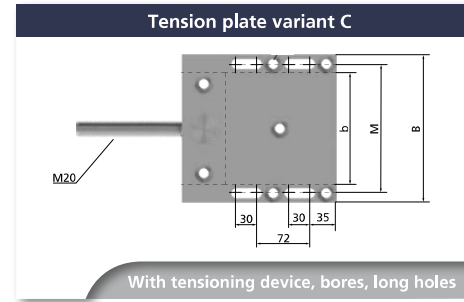
Tension plate variant B type 2								
Belt width b/ belt type	B [mm]	L [mm]	M [mm]	$m_1$ [mm]	a [mm]	c [mm]	h [mm]	H [mm]
75 AT10	120	180	97	19,5	65	29,5	19,09	33
100 AT10	150	200	124	25,5	72	35	25,09	42
75 BATAK10	120	180	97	19,5	65	29,5	19,09	33
100 BATAK10	150	200	124	25,5	72	35	25,09	42
75 ATL10	120	180	97	19,5	65	29,5	18,8	33
100 ATL10	150	200	124	25,5	72	35	24,8	42
75 ATS15	120	180	97	19,5	65	29,5	18,38	33
100 ATS15	150	200	124	25,5	72	35	24,38	42
75 BATAK15	120	180	97	19,5	65	29,5	18,58	33
100 BATAK15	150	200	124	25,5	72	35	24,58	42
75 T20	120	180	97	19,5	65	29,5	18,08	33
100 T20	150	200	124	25,5	72	35	24,08	42
75 AT20	120	180	97	19,5	65	29,5	18,08	33
100 AT20	150	200	124	25,5	72	35	24,08	42
75 ATL20	120	180	97	19,5	65	29,5	17,68	33
100 ATL20	150	200	124	25,5	72	35	23,68	42

**Note:**  
 For the timing belt types 75 BATAK10/BATAK15 and 100 BATAK10/BATAK15 it is necessary to indicate the curve direction!

**Note:**  
 The gear inserts for BATAK10 and BATAK15 depend on the curve direction „left“ or „right“.



With tensioning device, bores, long holes



With tensioning device, bores, long holes

Tension plate variant C						
Belt width b/ belt type	B [mm]	L [mm]	M [mm]	$m_1$ [mm]	h [mm]	H [mm]
150 AT10	200	210	174	25,5	25,05	42
150 ATS15	200	210	174	25,5	24,25	42
150 T20	200	210	174	25,5	24,20	42
150 AT20	200	210	174	25,5	23,85	42

Mounting instructions

Tension plate	Variante C
Belt width	150 mm
Pre-assembly screws (SW=wrench size across flats)	Countersunk head screws ISO 10642, 7xM12 - 8.8 (SW8), additional screw M12 in the middle of the belt
Recommended tightening moment of the pre-assembly screws $M_A$	42 Nm
Fastening screws	Cheese head screws ISO 4762 4xM12 - 8.8 (SW10)
Recommended tightening moment of the fastening screws $M_A$	105 Nm
Tightening moment for generation of tension force $M_A$	122 Nm on Countersunk head screws
Admissible force of the tension plates $F_{adm}$	190400 N

BRECO order example

**Tension plate** 200 x 210 AT10 Var C without tensioning device  
 Width B  
 Length L  
 Belt type / pitch  
 Variant  
 Version