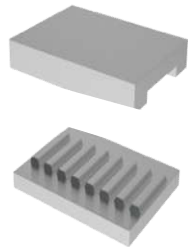


The table below is an overview about our available tension plate variants according to the different belt types.

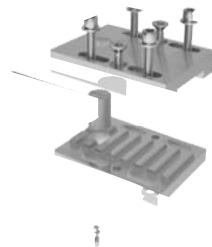
BRECO®-fix Tension plates							
Pitch	Belt type	Belt widths					
		25	32	50	75	100	150
5 mm	T5	Variant A Type 1/2/3	Variant A Type 1/2/3	Variant A Type 1/2/3	-	-	-
	AT5 / ATL5	Variant A Type 1/2/3	Variant A Type 1/2/3	Variant A Type 1/2/3	-	-	-
10 mm	T10	Variant A Type 1/2/3	Variant A Type 1/2/3	Variant A Type 1/2/3	-	-	-
	AT10	Variant A Type 1/2/3	Variant A Type 1/2/3	Variant A Type 1/2/3	Variant B Type 2	Variant B Type 2	Variant C
	BATK10	-	Variant A Type 1/2/3	Variant A Type 1/2/3	Variant B Type 2	Variant B Type 2	-
	ATL10	Variant A Type 1/2/3	Variant A Type 1/2/3	Variant B Type 1	Variant B Type 2	Variant B Type 2	-
15 mm	ATS15	-	-	Variant B Type 1	Variant B Type 2	Variant B Type 2	Variant C
	BATK15	-	-	Variant B Type 1	Variant B Type 2	Variant B Type 2	-
20 mm	T20	-	-	Variant B Type 1	Variant B Type 2	Variant B Type 2	Variant C
	AT20	-	-	Variant B Type 1	Variant B Type 2	Variant B Type 2	Variant C
	ATL20	-	-	Variant B Type 1	Variant B Type 2	Variant B Type 2	-

BRECO®-fix Tension plate



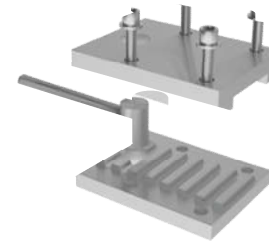
Variant A type 1
Without bores and tensioning device

BRECO®-fix Tension plate



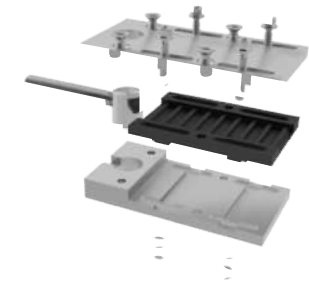
Variant A type 2
With bores, long holes and tensioning device

BRECO®-fix Tension plate



Variant A type 3
With tensioning device, threaded holes in the upper plate
and screw thread in the bottom plate

BRECO®-fix Tension plate



Variant B type 1
With tensioning device, bores, long holes and toothed insert

Remark:

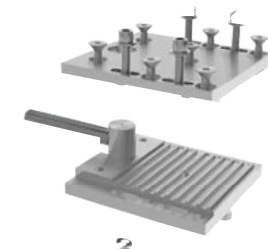
Variant „B“ and „C“ are also available without tensioning device. If you don't need it, please make a note in the order code.

BRECO®-fix Tension plate



Variant B type 2
With tensioning device, bores, long holes and
toothed insert

BRECO®-fix Tension plate



Variant C
With tensioning device, bores, long holes

