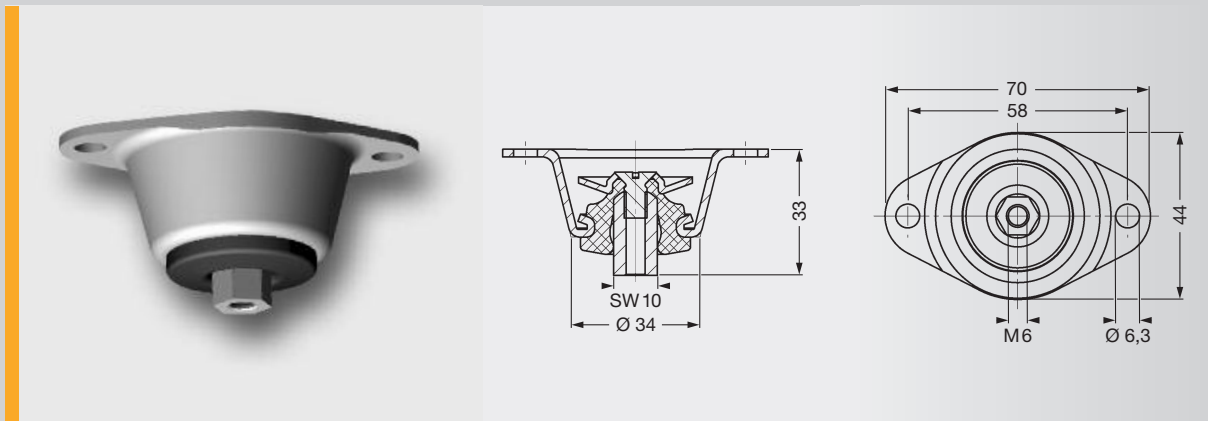
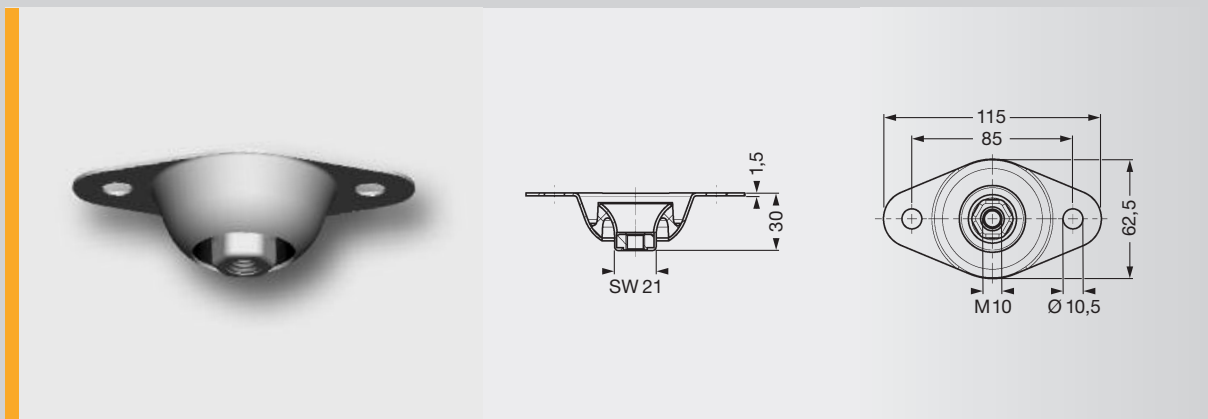


SCHWINGMETALL® Spezialelemente

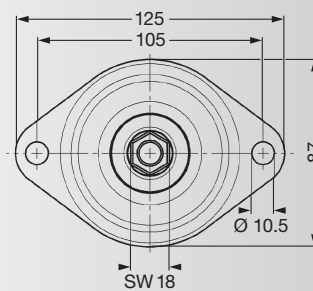
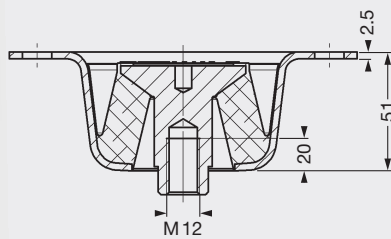


Form-Nr. 58500



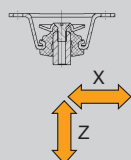
Form-Nr. 27994

Federsteifigkeiten			max. Belastungen			Masse Stück [kg]	Elastomer Härte [Shore A]	Form-Nr.	Artikel-Nr.
C _x [N/mm]	C _y [N/mm]	C _z [N/mm]	F _x [N]	F _y [N]	F _z [N]				
27	27	24	40	40	100	0,098	40	58500	3956408000
36	36	44	54	54	160	0,098	55	58500	3956208000
49	49	68	70	70	200	0,098	65	58500	3956108000
24	24	90	48	48	250	0,11	40	27994	3956404000
47	47	165	95	95	500	0,11	55	27994	3956204000
74	74	235	150	150	700	0,11	65	27994	3956104000
40	40	205	80	80	1700	0,5	40	210871	4000009125
55	55	285	110	110	2350	0,5	55	210871	4000009126
85	85	430	170	170	3000	0,5	65	210871	4000009127

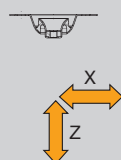


Form-Nr. 210871

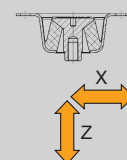
Belastungsrichtungen



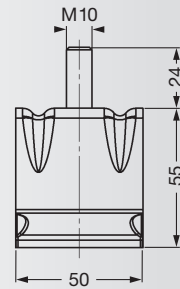
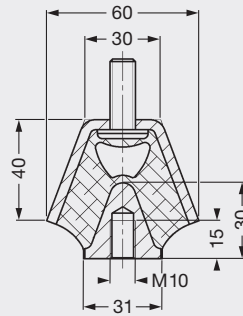
Belastungsrichtungen



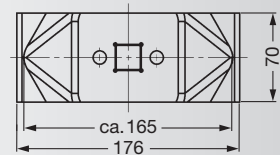
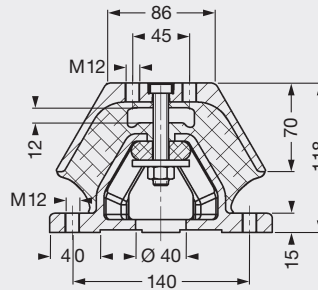
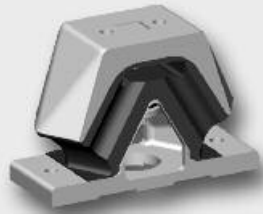
Belastungsrichtungen



SCHWINGMETALL® Spezialelemente



Form-Nr. 38451

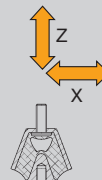


Form-Nr. 33660

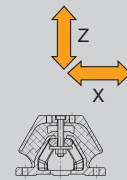
Dachelemente

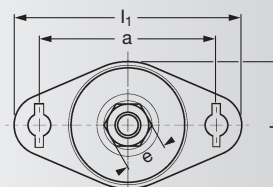
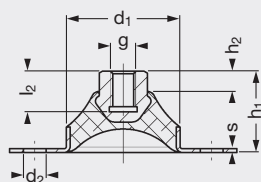
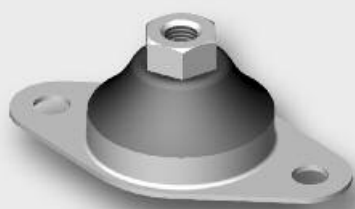
Federsteifigkeiten			max. Belastungen			Masse Stück [kg]	Elastomer Härte [Shore A]	Form-Nr.	Artikel-Nr.
C_x [N/mm]	C_y [N/mm]	C_z [N/mm]	F_x [N]	F_y [N]	F_z [N]				
613	158	306	600	320	690	0,413	55	38451	3946208000
950	298	880	4500	1500	9810	3,3	55	33660	3946209000
1462	459	1354	6500	2000	14000	3,3	65	33660	3946109000

Belastungsrichtungen



Belastungsrichtungen





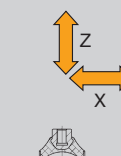
Hutelemente

Abmessungen											Form-Nr.	Artikel-Nr.
a [mm]	b [mm]	d1 [mm]	d2 [mm]	e [mm]	g [mm]	h1 [mm]	h2 [mm]	l1 [mm]	l2 [mm]	s [mm]		
45	35	30	6	SW11	M6	20	5	60	8	1,5	27860	3956401000
45	35	30	6	SW11	M6	20	5	60	8	1,5	27860	3956201000
45	35	30	6	SW11	M6	20	5	60	8	1,5	27860	3956101000
70	50	45	9	SW17	M10	32	8	90	16	1,5	27859	3956402000
70	50	45	9	SW17	M10	32	8	90	16	1,5	27859	3956202000
70	50	45	9	SW17	M10	32	8	90	16	1,5	27859	3956102000
105	80	70	13	SW24	M16	50	13	140	17	2,0	27924	3956403000
105	80	70	13	SW24	M16	50	13	140	17	2,0	27924	3956203000
105	80	70	13	SW24	M16	50	13	140	17	2,0	27924	3956103000

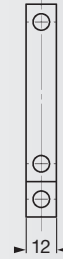
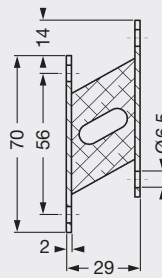
Hutelemente

Federsteifigkeiten			max. Belastungen			Masse Stück [kg]	Elastomer Härte [Shore A]	Form-Nr.	Artikel-Nr.
C _x [N/mm]	C _y [N/mm]	C _z [N/mm]	F _x [N]	F _y [N]	F _z [N]				
28	28	28	50	50	100	0,025	40	27860	3956401000
54	54	54	100	100	200	0,025	55	27860	3956201000
93	93	93	120	120	250	0,025	65	27860	3956101000
44	44	44	100	100	200	0,074	40	27859	3956402000
75	75	75	175	175	350	0,074	55	27859	3956202000
122	122	122	275	275	550	0,074	65	27859	3956102000
88	88	88	400	400	800	0,250	40	27924	3956403000
160	160	160	700	700	1400	0,250	55	27924	3956203000
230	230	230	1000	1000	2200	0,250	65	27924	3956103000

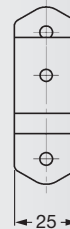
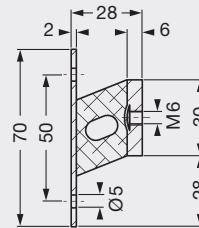
Belastungsrichtungen



SCHWINGMETALL® Spezialelemente



Form-Nr. 25187

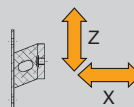


Form-Nr. 25284

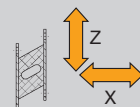
Geräteelemente

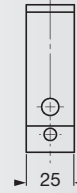
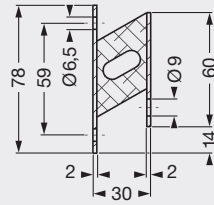
Federsteifigkeiten			max. Belastungen			Masse Stück [kg]	Elastomer Härte [Shore A]	Form-Nr.	Artikel-Nr.
C _x [N/mm]	C _y [N/mm]	C _z [N/mm]	F _x [N]	F _y [N]	F _z [N]				
20	4	4	60	20	40	0,035	40	25187	3946403000
39	6	6	110	40	80	0,035	55	25187	3946203000
60	10	10	180	50	100	0,035	65	25187	3946103000
54	9	9	125	45	90	0,072	40	25284	3946401000
104	16	16	250	75	150	0,072	55	25284	3946201000
160	25	25	360	100	200	0,072	65	25284	3946101000
43	8	8	130	40	100	0,076	40	21423	3946404000
83	14	14	205	70	200	0,076	55	21423	3946204000
128	23	23	300	120	250	0,076	65	21423	3946104000
73	20	20	180	100	200	0,127	40	24332	3946406000
140	37	37	350	185	250	0,127	55	24332	3946206000
215	57	57	500	200	280	0,127	65	24332	3946106000

Belastungsrichtungen

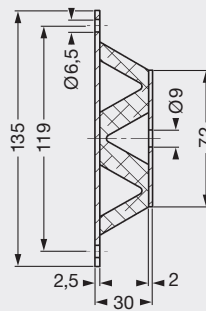


Belastungsrichtungen



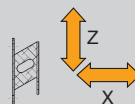


Form-Nr. 21423



Form-Nr. 24332

Belastungsrichtungen



Belastungsrichtungen

