

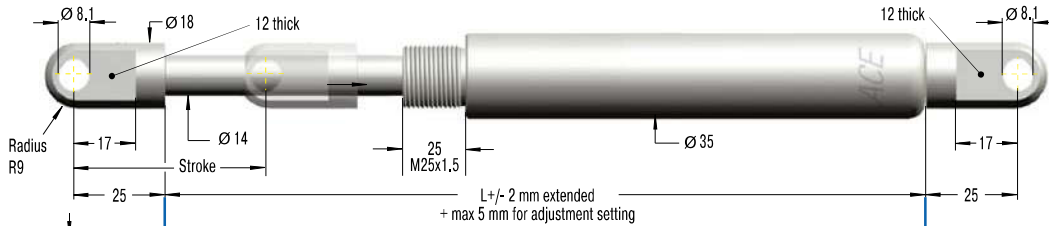
Adjustable, Without Free Travel, Compression and extension force 30 N to 10,000 N

End Fitting

Standard Dimensions

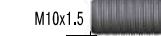
End Fitting

A10



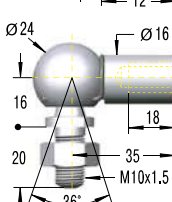
Eye A10
max. force 10,000 N

B10



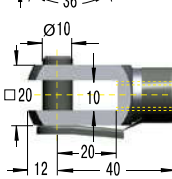
Stud Thread B10

C10



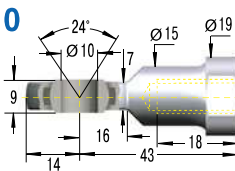
Angle Ball Joint C10
max. force 1,800 N

D10



Clevis Fork D10
max. force 10,000 N

E10



Swivel Eye E10
max. force 10,000 N

Performance and Dimensions

TYPES	Stroke mm	L extended mm	¹ Compression force max. N	¹ Compression force with MBS max. N
HBS-35-100	117	487	10,000	10,000
HBS-35-150	167	637	7,500	10,000
HBS-35-200	217	787	5,150	10,000
HBS-35-300	317	1,087	2,850	10,000
HBS-35-400	417	1,387	1,800	10,000
HBS-35-500	517	1,687	1,240	10,000
HBS-35-600	617	1,987	910	8,600
HBS-35-700	717	2,287	690	6,500
HBS-35-800	817	2,587	540	5,100

¹ Max. extension force for all stroke lengths 10,000 N.

Ordering Example

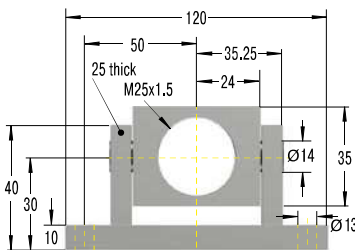
HBS-35-300-EE-N

- Type (Hydraulic Damper) _____
- Body Ø (35 mm) _____
- Stroke (300 mm) _____
- Piston Rod End Fitting E10 _____
- Body End Fitting E10 _____
- Damping Direction (N = in stroke only) _____

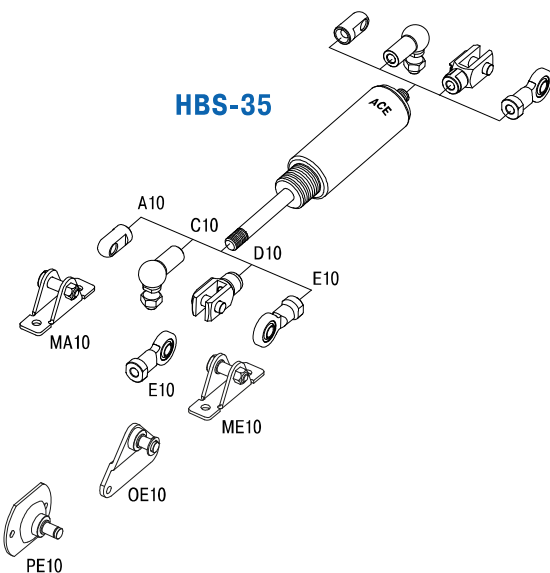
Model Type Prefix

- P: Damping in both directions
- N: Damping on in stroke only
- M: Damping on out stroke only
- X: Special model suffix

Mounting accessories see from page 200.



Swivel Mounting Block MBS-35



Technical Data

- Compression and extension force:** 30 N to 10,000 N
- Operating temperature range:** -20 °C to +80 °C
- Adjustment:** Achieved by turning the piston rod in its fully extended or fully compressed position.
Clockwise rotation = increase of the damping
Anti-clockwise rotation = decrease of the damping
Damping force adjustable before installation. The adjustment can add a max. of 5 mm to the L dimension.
- Positive stop:** External positive stops 1 mm to 1.5 mm before the end of stroke provided by the customer.
- Material:** Outer body: Zinc plated or coated steel; Piston rod: Hard chrome plated steel; End fittings: Zinc plated steel
- Mounting:** In any position
- Note:** Increased break-away force if unit has not moved for some time.
- End fittings:** They are interchangeable and if necessary must be positively secured by the customer to prevent unscrewing.
- Safety instructions:** For long strokes with high forces use swivel mounting block MBS.