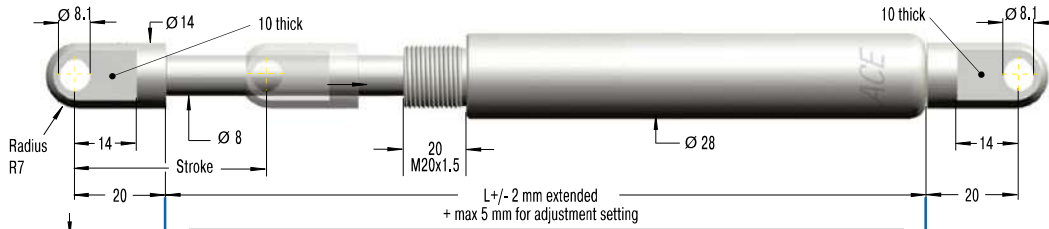


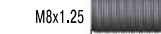
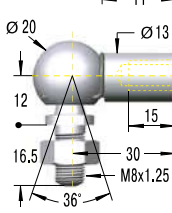
Adjustable, Without Free Travel, Compression and extension force 30 N to 3,000 N

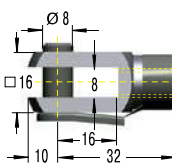
End Fitting

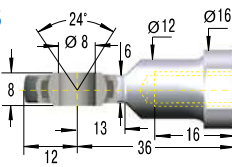
Standard Dimensions

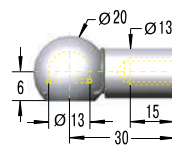
End Fitting

A8

Eye A8
max. force 3,000 N

B8

Stud Thread B8
C8

Angle Ball Joint C8
max. force 1,200 N

D8

Clevis Fork D8
max. force 3,000 N

E8

Swivel Eye E8
max. force 3,000 N

G8

Ball Socket G8
max. force 1,200 N

Performance and Dimensions

TYPES	Stroke mm	L extended mm	¹ Compression force max. N	¹ Compression force with MBS max. N
HBS-28-50	62	297	3,000	3,000
HBS-28-100	112	447	1,550	3,000
HBS-28-150	162	597	900	3,000
HBS-28-200	212	747	600	3,000
HBS-28-250	262	897	440	3,000
HBS-28-300	312	1,047	330	3,000
HBS-28-350	362	1,197	260	2,500
HBS-28-400	412	1,347	200	2,000

¹ Max. extension force for all stroke lengths 3,000 N.

Ordering Example

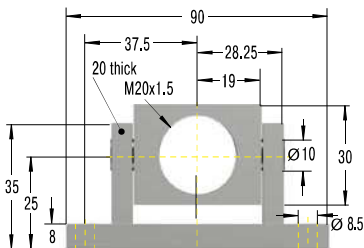
Type (Hydraulic Damper) **HBS-28-150-DD-M**
 Body Ø (28 mm)
 Stroke (150 mm)
 Piston Rod End Fitting D8
 Body End Fitting D8
 Damping Direction (M = out stroke only)

Model Type Prefix

P: Damping in both directions
 N: Damping on in stroke only
 M: Damping on out stroke only
 X: Special model suffix

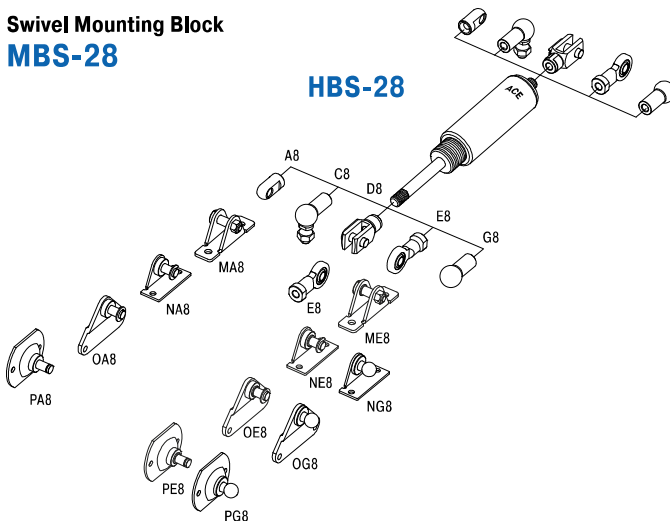
Mounting accessories see from page 200.

Rod Shroud
 no retrofit
 Ø 32, L = Stroke + 80



Swivel Mounting Block MBS-28

HBS-28



Technical Data

Compression and extension force: 30 N to 3,000 N

Operating temperature range: -20 °C to +80 °C

Adjustment: Achieved by turning the piston rod in its fully extended or fully compressed position.

Clockwise rotation = increase of the damping

Anti-clockwise rotation = decrease of the damping

Damping force adjustable before installation. The adjustment can add a max. of 5 mm to the L dimension.

Positive stop: External positive stops 1 mm to 1.5 mm before the end of stroke provided by the customer.

Material: Outer body: Zinc plated or coated steel; Piston rod: Hard chrome plated steel; End fittings: Zinc plated steel

Mounting: In any position

Note: Increased break-away force if unit has not moved for some time.

End fittings: They are interchangeable and if necessary must be positively secured by the customer to prevent unscrewing.

Safety instructions: For long strokes with high forces use swivel mounting block MBS.