

Adjustable, Without Free Travel, Compression and extension force 100 N to 6,000 N

End Fitting

Standard Dimensions

End Fitting

B10 Stud Thread **B10**

A10 Eye **A10**
max. force 10,000 N

C10 Angle Ball Joint **C10**
max. force 1,800 N

D10 Clevis Fork **D10**
max. force 10,000 N

E10 Swivel Eye **E10**
max. force 10,000 N

Performance and Dimensions

TYPES	Stroke mm	L extended mm	¹ Compression force max. N
HBD-50-50	50	192	6.000
HBD-50-100	100	292	6.000
HBD-50-150	150	392	4.400
HBD-50-200	200	492	2.800
HBD-50-250	250	592	2.000
HBD-50-300	300	692	1.400

¹ Max. extension force for all stroke lengths 6,000 N.

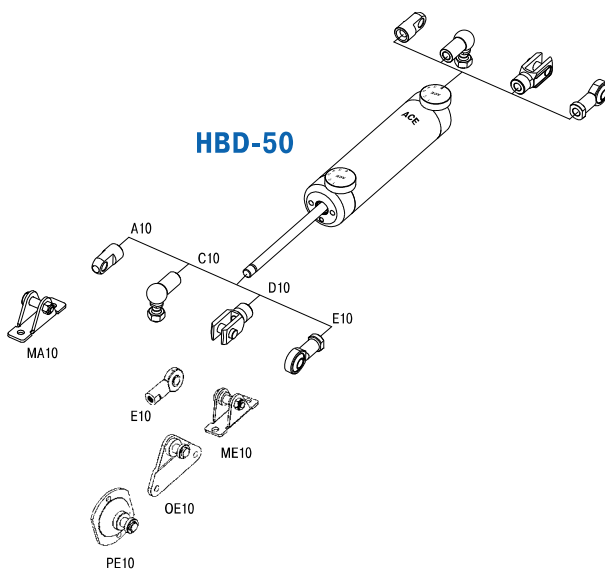
Ordering Example **HBD-50-150-EE**

Type (Hydraulic Damper) _____ ↑ ↑ ↑ ↑ ↑
 Body Ø (50 mm) _____ ↑ ↑ ↑ ↑ ↑
 Stroke (150 mm) _____ ↑ ↑ ↑ ↑ ↑
 Piston Rod End Fitting E10 _____ ↑ ↑ ↑ ↑ ↑
 Body End Fitting E10 _____ ↑ ↑ ↑ ↑ ↑

Model Type Prefix

P: Damping in both directions (standard model)
 M: Damping on out stroke only (adjustment knob at "rear end" free flow)
 N: Damping on in stroke only (adjustment knob at "piston rod end" free flow)

Mounting accessories see from page 200.



Technical Data

Compression and extension force: 100 N to 6,000 N

Operating temperature range: 0 °C to 65 °C

Adjustment: Steplessly adjustable

Positive stop: External positive stops 1 mm to 1.5 mm before the end of stroke provided by the customer.

Material: Outer body: Coated steel; Piston rod: Hard chrome plated steel; End fittings: Zinc plated steel

Mounting: In any position

Note: Increased break-away force if unit has not moved for some time. One locknut included.

End fittings: They are interchangeable and if necessary must be positively secured by the customer to prevent unscrewing.