

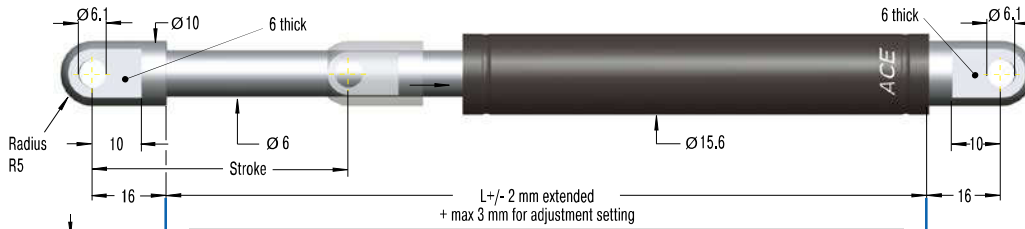
Adjustable, Compression and extension force 20 N to 800 N

End Fitting

Standard Dimensions

End Fitting

A5



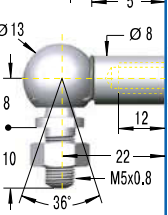
Eye A5  
max. force 800 N

B5



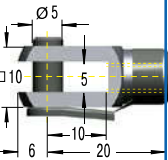
Stud Thread B5

C5



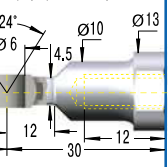
Angle Ball Joint C5  
max. force 500 N

D5



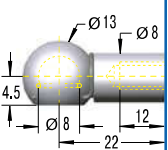
Clevis Fork D5  
max. force 800 N

E5



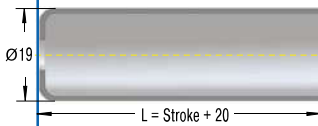
Swivel Eye E5  
max. force 800 N

G5



Ball Socket G5  
max. force 500 N

Rod Shroud W5-15



Performance and Dimensions

TYPES	Stroke mm	L extended mm	<sup>1</sup> Compression force max. N
HB-15-25	25	93	800
HB-15-50	50	143	800
HB-15-75	75	193	800
HB-15-100	100	243	350
HB-15-150	150	343	300

<sup>1</sup> Max. extension force for all stroke lengths 800 N.

Ordering Example

HB-15-150-CC-M

- Type (Hydraulic Damper) \_\_\_\_\_
- Body Ø (15.6 mm) \_\_\_\_\_
- Stroke (150 mm) \_\_\_\_\_
- Piston Rod End Fitting C5 \_\_\_\_\_
- Body End Fitting C5 \_\_\_\_\_
- Damping Direction (M = out stroke only) \_\_\_\_\_

Model Type Prefix

- P: Damping in both directions
- N: Damping on in stroke only
- M: Damping on out stroke only
- X: Special model suffix

Mounting accessories see from page 200.

Technical Data

**Compression and extension force:** 20 N to 800 N

**Free travel:** Construction of the damper results in a free travel of approx. 20 % of stroke.

**Separator piston:** Extension force 40 N; dimension L = 2.45 x stroke + 49 mm. Part number: add suffix -T.

**Operating temperature range:** -20 °C to +80 °C

**Adjustment:** Achieved by turning the piston rod in its fully extended or fully compressed position.

Clockwise rotation = increase of the damping  
Anti-clockwise rotation = decrease of the damping  
Damping force adjustable before installation. Adjustment can add a max. of 6 mm to the L dimension.

**Positive stop:** External positive stops 1 mm to 1.5 mm before the end of stroke provided by the customer.

**Material:** Outer body: coated steel; Piston rod: steel with wear-resistant coating; End fittings: zinc plated steel

**Mounting:** in any position

**Note:** Increased break-away force if unit has not moved for some time.

**End fittings:** They are interchangeable and if necessary must be positively secured by the customer to prevent unscrewing.

