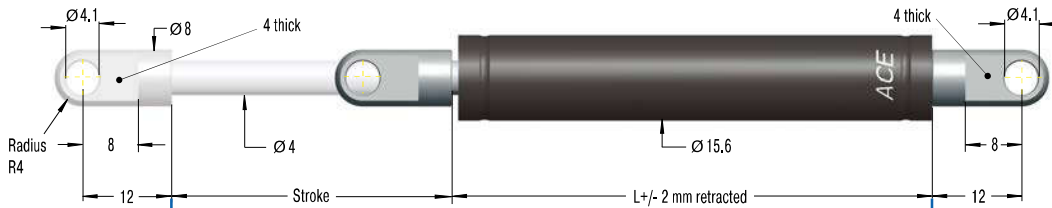


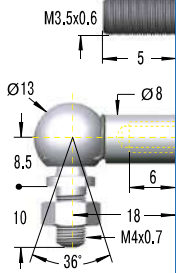
Valve Technology, Traction force 50 N to 150 N (extended up to 183 N)

End Fitting

Standard Dimensions

End Fitting

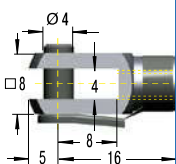
A3,5

Eye A3,5
max. force 370 N

B3,5
C3,5


Performance and Dimensions

TYPES	Stroke mm	L retracted mm	Traction force max. N
GZ-15-20	20	87	150
GZ-15-40	40	107	150
GZ-15-50	50	117	150
GZ-15-60	60	127	150
GZ-15-80	80	147	150
GZ-15-100	100	167	150
GZ-15-120	120	187	150
GZ-15-150	150	217	150

Stud Thread B3,5
Angle Ball Joint C3,5
max. force 370 N

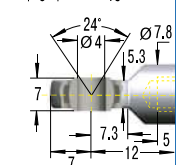
D3,5


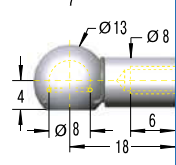
Ordering Example

GZ-15-150-AC-150

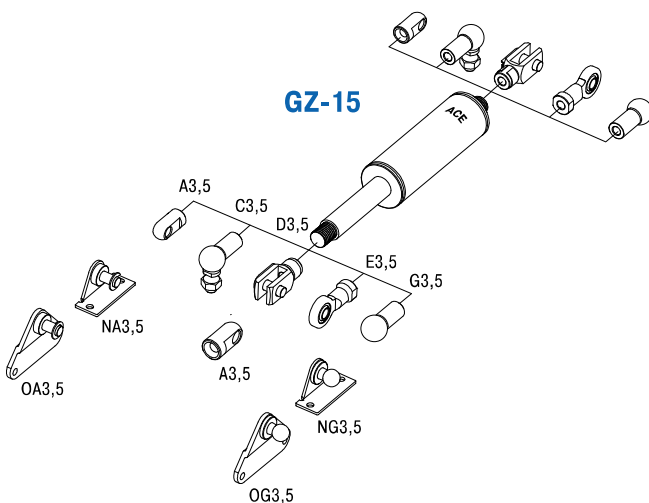
Type (Pull Type) _____
 Body Ø (15.6 mm) _____
 Stroke (150 mm) _____
 Piston Rod End Fitting A3,5 _____
 Body End Fitting C3,5 _____
 Traction Force F₁ 150 N _____

Clevis Fork D3,5
max. force 370 N

E3,5

Swivel Eye E3,5
max. force 370 N

G3,5

Ball Socket G3,5
max. force 370 N

Mounting accessories see from page 200.

Adjuster Knob DE-GAS-3,5
See page 175.


Technical Data

Traction force: 50 N to 150 N (extended up to 183 N)

Progression: Approx. 12 % to 22 %

Lifetime: Approx. 2,000 m

Operating temperature range: -20 °C to +80 °C

Material: Outer body, End fittings: zinc plated steel; Piston rod: stainless steel (1.4301/1.4305, AISI 304/303)

Mounting: with piston rod upwards

End position damping length: Without damping. For end position damping use damping material (e.g. TUBUS or SLAB).

Positive stop: External positive stop at the end of stroke provided by the customer.

End fittings: They are interchangeable and if necessary must be positively secured by the customer to prevent unscrewing.