

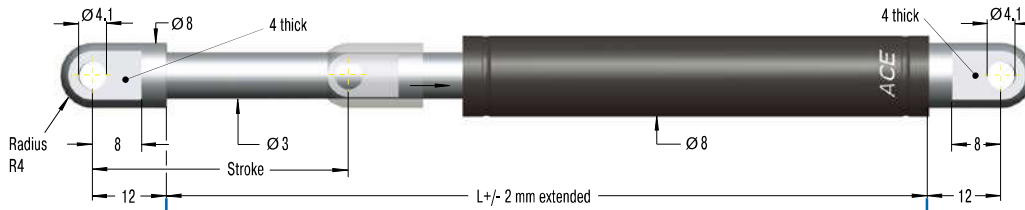
Valve Technology, Extension force 10 N to 100 N (compressed up to 133 N)

End Fitting

Standard Dimensions

End Fitting

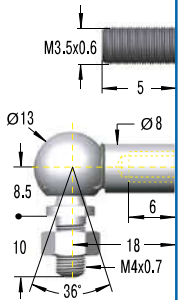
A3,5



Eye A3,5
max. force 370 N

B3,5

C3,5

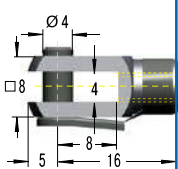


Performance and Dimensions			
TYPES	Stroke mm	L extended mm	Extension force max. N
GS-8-20	20	72	100
GS-8-30	30	92	100
GS-8-40	40	112	100
GS-8-50	50	132	100
GS-8-60	60	152	100
GS-8-80	80	192	100

Stud Thread B3,5

Angle Ball Joint C3,5
max. force 370 N

D3,5



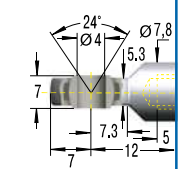
Ordering Example

GS-8-30-AC-30

Type (Push Type) _____
 Body Ø (8 mm) _____
 Stroke (30 mm) _____
 Piston Rod End Fitting A3,5 _____
 Body End Fitting C3,5 _____
 Nominal Force F₁ 30 N _____

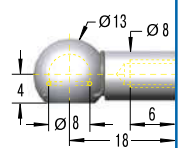
Clevis Fork D3,5
max. force 370 N

E3,5



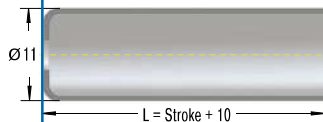
Swivel Eye E3,5
max. force 370 N

G3,5



Ball Socket G3,5
max. force 370 N

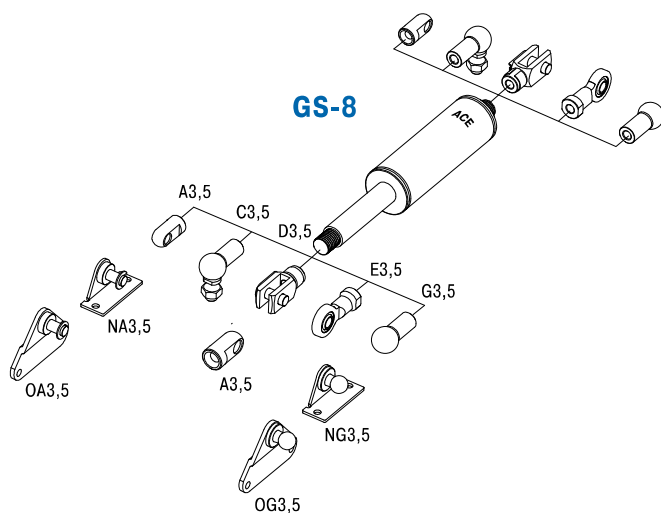
Rod Shroud W3,5-8



Mounting accessories see from page 200.

Adjuster Knob DE-GAS-3,5
See page 175.

Issue 07.2017 – Specifications subject to change



Technical Data

Extension force: 10 N to 100 N (compressed up to 133 N)

Progression: Approx. 29 % to 33 %

Operating temperature range: -20 °C to +80 °C

Material: Outer body: coated steel; Piston rod: stainless steel (1.4301/1.4305, AISI 304/303); End fittings: zinc plated steel

Mounting: We recommend mounting with piston rod downwards to take advantage of the built-in end position damping.

End position damping length: approx. 5 mm (depending on the stroke)

Positive stop: External positive stop at the end of stroke provided by the customer.

Note: Increased break-away force if unit has not moved for some time.

End fittings: They are interchangeable and if necessary must be positively secured by the customer to prevent unscrewing.

Safety instructions: Gas springs (push type) should not be installed under pre-tension.