

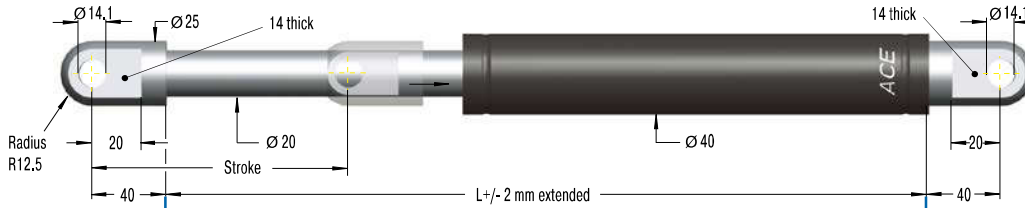
Valve Technology, Extension force 500 N to 5,000 N (compressed up to 7,500 N)

End Fitting

Standard Dimensions

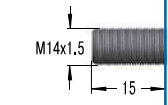
End Fitting

A14



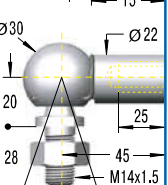
Eye A14
max. force 10,000 N

B14



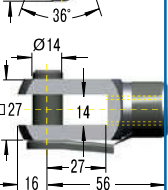
Stud Thread B14

C14



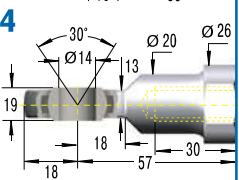
Angle Ball Joint C14
max. force 3,200 N

D14



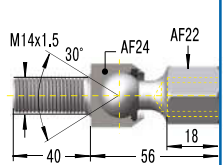
Clevis Fork D14
max. force 10,000 N

E14



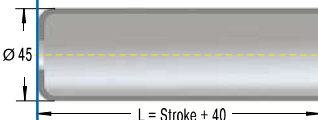
Swivel Eye E14
max. force 10,000 N

F14



Inline Ball Joint F14
max. force 3,200 N

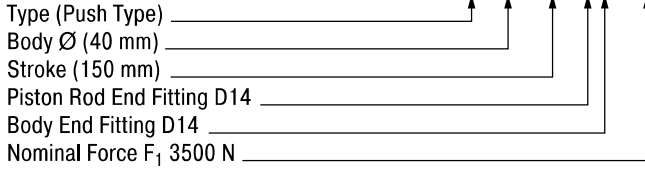
Rod Shroud W14-40



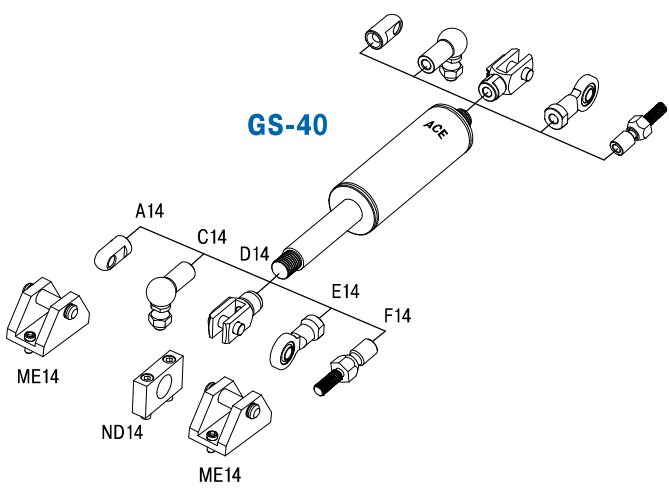
Performance and Dimensions			
TYPES	Stroke mm	L extended mm	Extension force max. N
GS-40-100	100	317	5,000
GS-40-150	150	417	5,000
GS-40-200	200	517	5,000
GS-40-250	250	617	5,000
GS-40-300	300	717	5,000
GS-40-400	400	917	5,000
GS-40-500	500	1,117	5,000
GS-40-600	600	1,317	4,150
GS-40-800	800	1,717	2,550
GS-40-1000	1,000	2,117	1,700

Ordering Example

GS-40-150-DD-3500



Mounting accessories see from page 200.



Technical Data

- Extension force:** 500 N to 5,000 N (compressed up to 7,500 N)
- Progression:** Approx. 38 % to 50 %
- Operating temperature range:** -20 °C to +80 °C
- Material:** Outer body: steel coated with UV paint; Piston rod: steel with wear-resistant coating; End fittings: zinc plated steel
- Mounting:** In any position. Hint: We recommend mounting with piston rod downwards to take advantage of the built-in end position damping.
- End position damping length:** approx. 30 mm to 70 mm (depending on the stroke)
- Positive stop:** External positive stop at the end of stroke provided by the customer.
- Note:** Integrated grease chamber reduces friction and optimises lubrication.
- End fittings:** They are interchangeable and if necessary must be positively secured by the customer to prevent unscrewing.
- Safety instructions:** Gas springs (push type) should not be installed under pre-tension.