

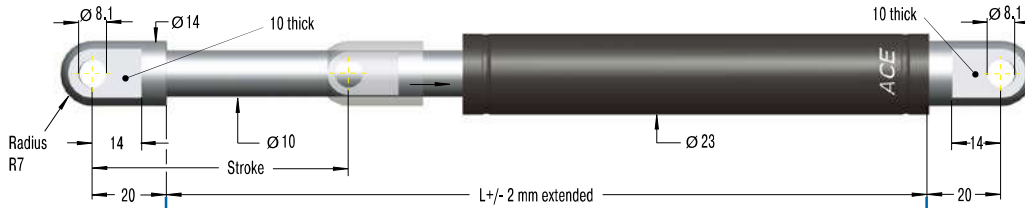
Valve Technology, Extension force 80 N to 1,300 N (compressed up to 1,820 N)

End Fitting

Standard Dimensions

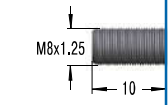
End Fitting

A8



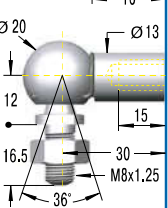
Eye A8  
max. force 3,000 N

B8



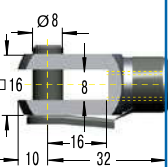
Stud Thread B8

C8



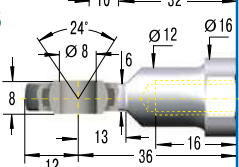
Angle Ball Joint C8  
max. force 1,200 N

D8



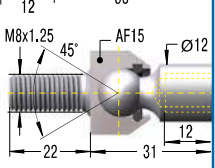
Clevis Fork D8  
max. force 3,000 N

E8



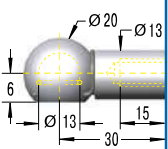
Swivel Eye E8  
max. force 3,000 N

F8



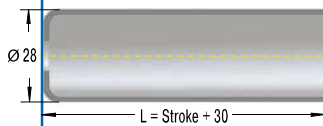
Inline Ball Joint F8  
max. force 1,200 N

G8



Ball Socket G8  
max. force 1,200 N

Rod Shroud W8-22



Performance and Dimensions

TYPES	Stroke mm	L extended mm	Extension force max. N
GS-22-50	50	164	1,300
GS-22-100	100	264	1,300
GS-22-150	150	364	1,300
GS-22-200	200	464	1,300
GS-22-250	250	564	1,300
GS-22-300	300	664	1,100
GS-22-350	350	764	850
GS-22-400	400	864	650
GS-22-450	450	964	550
GS-22-500	500	1,064	450
GS-22-550	550	1,164	400
GS-22-600	600	1,264	350
GS-22-650	650	1,364	300
GS-22-700	700	1,464	250

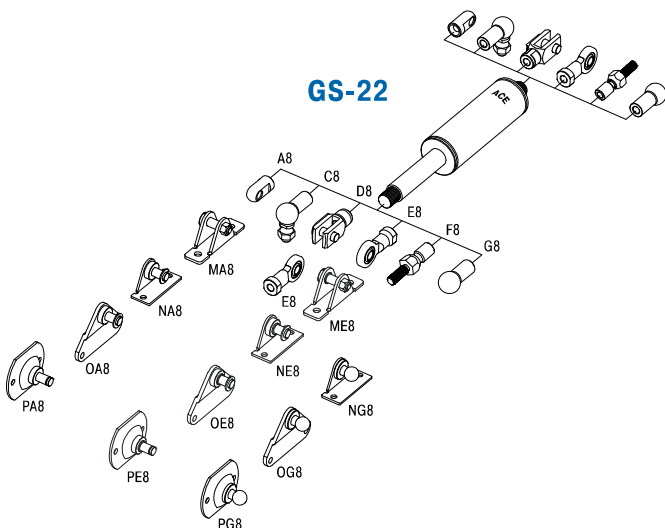
Ordering Example

GS-22-150-AE-800

Type (Push Type) \_\_\_\_\_  
 Body Ø (23 mm) \_\_\_\_\_  
 Stroke (150 mm) \_\_\_\_\_  
 Piston Rod End Fitting A8 \_\_\_\_\_  
 Body End Fitting E8 \_\_\_\_\_  
 Nominal Force F<sub>1</sub> 800 N \_\_\_\_\_

Mounting accessories see from page 200.

Adjuster Knob  
DE-GAS-8  
See page 175.



Technical Data

- Extension force:** 80 N to 1,300 N (compressed up to 1,820 N)
- Progression:** Approx. 30 % to 40 %
- Operating temperature range:** -20 °C to +80 °C
- Material:** Outer body: steel coated with UV paint; Piston rod: steel with wear-resistant coating; End fittings: zinc plated steel
- Mounting:** In any position. Hint: We recommend mounting with piston rod downwards to take advantage of the built-in end position damping.
- End position damping length:** approx. 20 mm to 70 mm (depending on the stroke)
- Positive stop:** External positive stop at the end of stroke provided by the customer.
- Note:** Integrated grease chamber reduces friction and wear and optimises lubrication.
- End fittings:** They are interchangeable and if necessary must be positively secured by the customer to prevent unscrewing.
- Safety instructions:** Gas springs (push type) should not be installed under pre-tension.