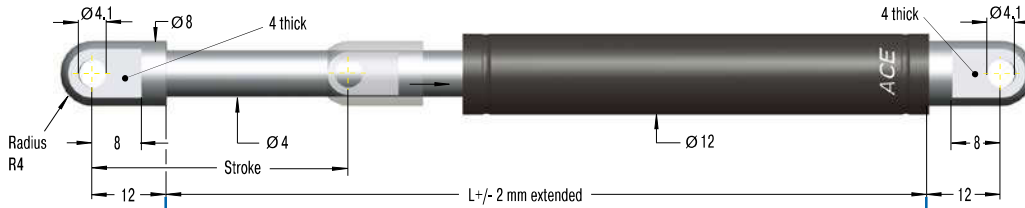
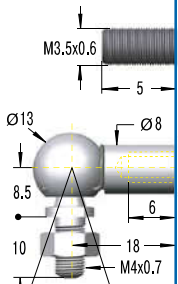


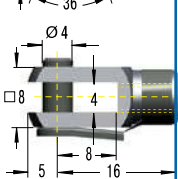
Valve Technology, Extension force 15 N to 180 N (compressed up to 243 N)

End Fitting
Standard Dimensions
End Fitting
A3,5

Eye A3,5
max. force 370 N

B3,5
C3,5

Performance and Dimensions

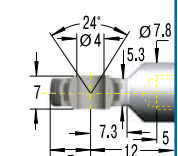
TYPES	Stroke mm	L extended mm	Extension force max. N
GS-12-20	20	72	180
GS-12-30	30	92	180
GS-12-40	40	112	180
GS-12-50	50	132	180
GS-12-60	60	152	180
GS-12-80	80	192	150
GS-12-100	100	232	150
GS-12-120	120	272	120
GS-12-150	150	332	100

Stud Thread B3,5
Angle Ball Joint C3,5
max. force 370 N

D3,5

Ordering Example

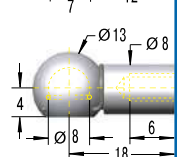
Type (Push Type) _____
 Body Ø (12 mm) _____
 Stroke (100 mm) _____
 Piston Rod End Fitting A3,5 _____
 Body End Fitting A3,5 _____
 Nominal Force F₁ 30 N _____

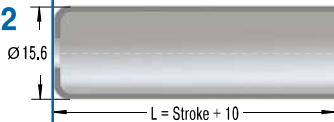
GS-12-100-AA-30
Clevis Fork D3,5
max. force 370 N

E3,5

Ordering Example

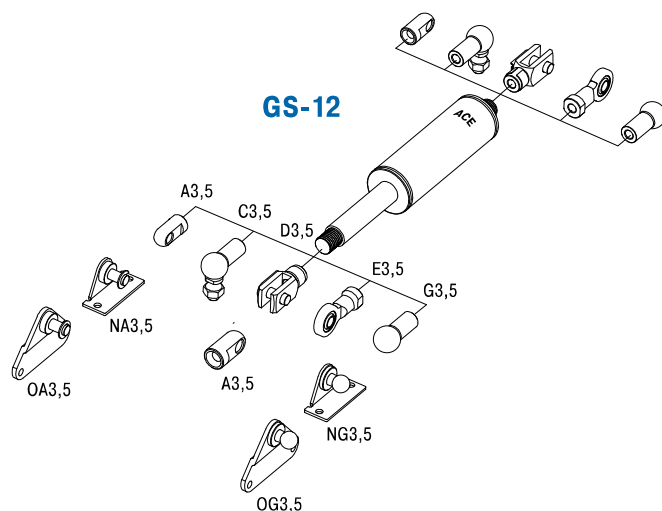
Mounting accessories see from page 200.

Swivel Eye E3,5
max. force 370 N

G3,5

Ball Socket G3,5
max. force 370 N

Rod Shroud W3,5-12

Adjuster Knob DE-GAS-3,5
See page 175.

Issue 07.2017 – Specifications subject to change


Technical Data
Extension force: 15 N to 180 N (compressed up to 243 N)

Progression: Approx. 20 % to 35 %

Operating temperature range: -20 °C to +80 °C

Material: Outer body: coated steel; Piston rod: stainless steel (1.4301/1.4305, AISI 304/303); End fittings: zinc plated steel

Mounting: We recommend mounting with piston rod downwards to take advantage of the built-in end position damping.

End position damping length: approx. 10 mm (depending on the stroke)

Positive stop: External positive stop at the end of stroke provided by the customer.

Note: Increased break-away force if unit has not moved for some time.

End fittings: They are interchangeable and if necessary must be positively secured by the customer to prevent unscrewing.

Safety instructions: Gas springs (push type) should not be installed under pre-tension.