

# FDT

The flat disc brake for two-sided damping

**Continuous Rotation**  
**Damping torque 2 Nm to 8.7 Nm**

The damping direction of the flat constructive ACE rotary damper FDT with robust steel body is two-sided rotation. It can brake directly in the pivot point of the square receptacle. ACE rotary dampers are maintenance-free and ready-to-install.

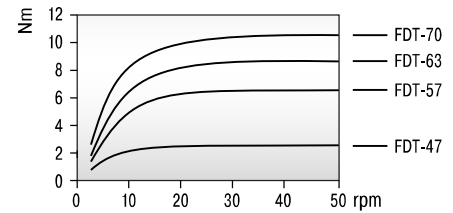


## Technical Data

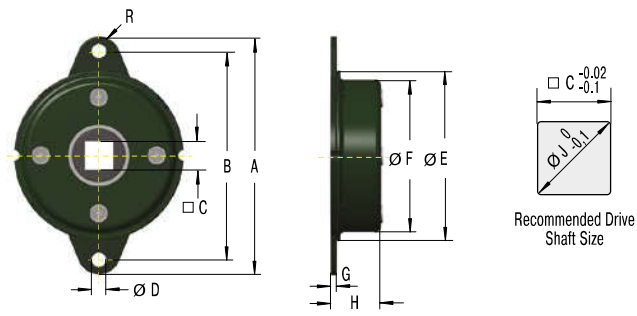
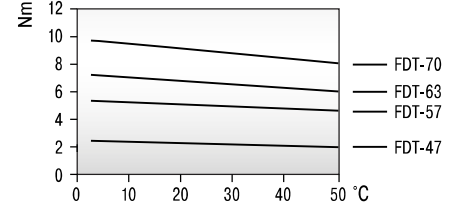
- Construction size:** Ø 47 mm to 70 mm
- Rotational speed max.:** 50 rpm
- Lifetime:** 50,000 cycles (1 cycle = 360° left-hand, 360° right-hand). Even after this time, the dampers still produce over approx. 80 % of their original damping moment. The service life may be significantly higher or lower, depending on the application.
- Operating temperature range:** -10 °C to +50 °C
- Material:** Outer body: Steel; Output shaft sleeve: Nylon
- Mounting:** In any position
- Mounting information:** No axial or radial forces may be induced via the shaft.
- Safety instructions:** Do not use rotary dampers as supports. Provide an external guide or support.
- On request:** Special designs available on request.

## Characteristics

At 23 °C ambient temperature



At 20 rpm rotational speed



## Performance and Dimensions

TYPES	<sup>1</sup> Damping torque Nm	Damping direction	A mm	B mm	C mm	D mm	E mm	F mm	G mm	H mm	R mm	J mm	Weight kg
FDT-47	2.0 +/- 0.3	bidirectional	65	56	8	4.5	47	42.8	1.6	10.3	4.5	10	0.050
FDT-57	4.7 +/- 0.5	bidirectional	79	68	10	5.5	57	52.4	1.6	11.2	5.5	13	0.075
FDT-63	6.7 +/- 0.7	bidirectional	89	76	12.5	6.5	63	58.6	1.6	11.3	6.5	17	0.095
FDT-70	8.7 +/- 0.8	bidirectional	95	82	12.5	6.5	70	65.4	1.6	11.3	6.5	17	0.110

<sup>1</sup> The indicated damping torque refers to a rotational speed of 20 rpm and an ambient temperature of 23 °C.

Issue 07.2017 – Specifications subject to change