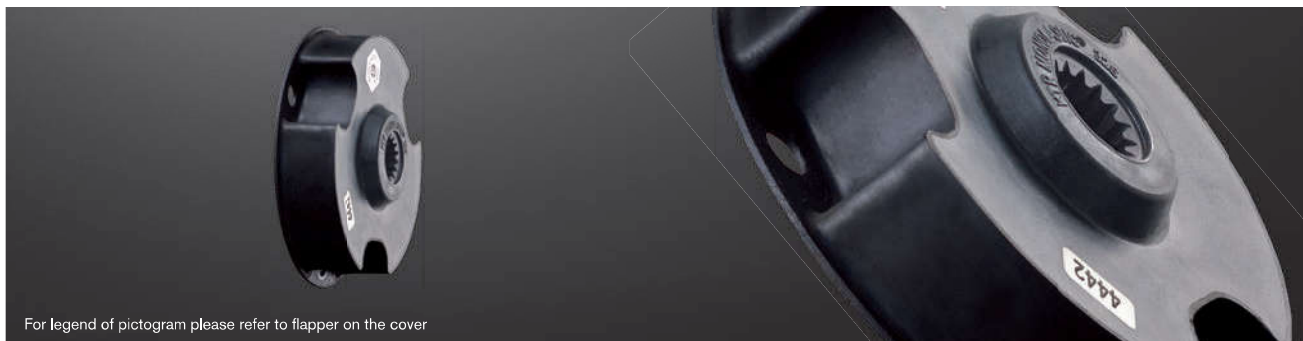


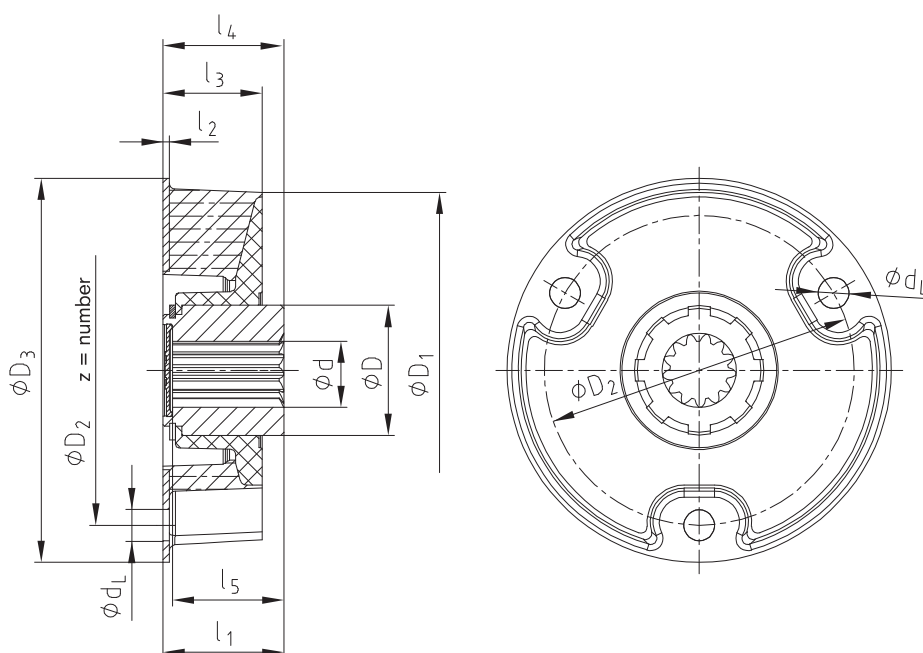
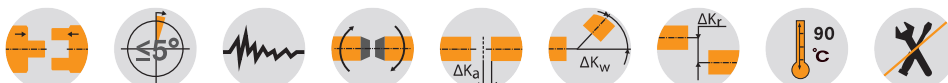
MONOLASTIC®

One-piece, flexible flange couplings

Type with 3 holes (EP 0853203/U.S. Patent 6,117,017)



For legend of pictogram please refer to flapper on the cover



MONOLASTIC®																	
Size	Elastomer hardness [Shore A]	Torque [Nm]			Dimensions [mm]												
		T _{KN}	T _{K max}	T _{KW}	d	D	D ₁	D ₂	z	d _L	D ₃	l ₁	l ₂	l ₃	l ₄	l ₅	
22	65	40	100	20	20	34	93	80	3	8.10	100	33	1.5	32	34	30	
	65	70	175	35	25	42	115	100	3	10.10	124	40	2	32	40	38	
28	70	100	250	50	32	50	140	125	3	12.10	150	42	2	42	43	38	
	65	160	400	80	32	50	140	125	3	12.10	150	42	2	42	43	38	
32	70	225	562	112	32	50	140	125	3	12.10	150	42	2	42	43	38	
	65	160	400	80	32	50	140	125	3	12.10	150	42	2	42	43	38	
50-140	70	260	650	130	32	50	167	140	3	14.10	175	46	3	35	46	43	
50-165	70	300	750	150	32	50	175	165	3	16.15	200	46	3	35	46	43	
50-170	70	300	750	150	32	50	175	170	3	16.15	200	46	3	35	46	43	
60-165	70	400	1000	200	48	68	191	165	3	16.15	205	50	3	40	55	46	

Technical data									
Size	Elastomer hardness [Shore A]	C _{dyn.} with 60 °C [Nm/rad]	Perm. damping power with 60 °C P _{KW} [W]	Max. displacement with 2200 rpm ΔK _r [mm]	Perm. angular displacement with 2200 rpm ΔK _w [°]	Radial spring stiffness C _r [N/mm]	Mass moment of inertia [kgm ²]		Max. perm. operating speed n _{max} [rpm]
							JA	J _L	
22	65	600	10	0.6		200	0.00017	0.00010	6000
	65	900		0.6		300			
28	70	1300	15	0.5		400	0.00054	0.00033	6000
	65	1800	25	0.6		400			
32	70	2400		0.5		500	0.00120	0.00081	6000
	65	1800	25	0.6	1	400			
50-140		4200	35	0.5		1365	0.00210	0.00130	6000
50-165	70			0.5					
50-170		5600	40	0.5		1550	0.00250	0.00130	6000
60-165	70	7800	40	0.5		1500	0.00599	0.00358	6000

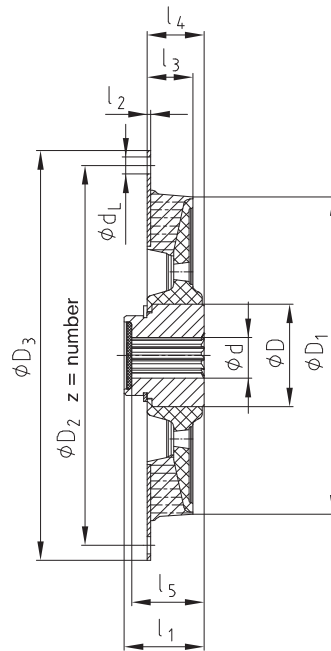
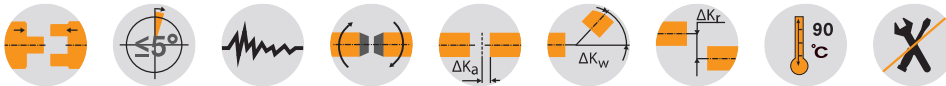
MONOLASTIC®

One-piece, flexible flange couplings

Type SAE (EP 0853203/U.S. Patent 6,117,017)



For legend of pictogram please refer to flapper on the cover



Flange dimensions according to SAE J620 [mm]

Size	D ₃	D ₂	z	d _L
6 1/2"	215.9	200.02	6	9
7 1/2"	241.3	222.25	8	9
8"	263.52	244.47	6	11
10"	314.32	295.27	8	11
11 1/2"	352.42	333.37	8	11

MONOLASTIC®																		
Size	Elastomer hardness [Shore A]	Torque [Nm]			Dimensions [mm]									MONOLASTIC® flanges according to SAE				
		T _{KN}	T _{K max}	T _{KW}	d	D	D ₁	l ₁	l ₂	l ₃	l ₄	l ₅	6 1/2"	7 1/2"	8"	10"	11 1/2"	
30	65	200	400	100	25	42	120	39	2	21	30	36	X	X				
	70	250	500	125														
50	65	350	700	175	32	50	167	42	2	24	30	38	X	X	X	X		
	70	450	900	225														
G50	70	600	1200	300	32	50	178	42	2	24	36	38		X	X	X		
65	65	750	1500	375	48	68	200	45	3	32	45	42					X	X
	70	1000	2000	500														
75	65	1500	3000	750	60	90	265	58	3	35	50	54					X	X
	70	1850	3700	925														

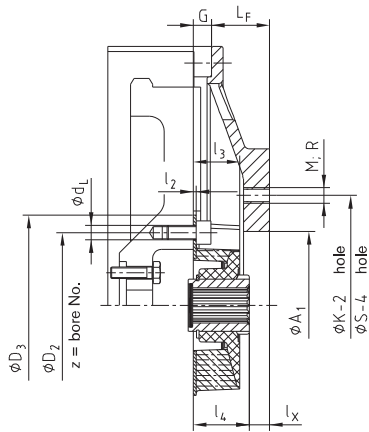
■ = Years of experience with applications at customer sites and additional test series in the KTR test field in Rheine enabled us to determine potentials allowing for an increase of the rated torques with some sizes of this series.

Technical data										
Size	Elastomer hardness [Shore A]	C _{dyn.} with 60 °C [Nm/rad]	Perm. damping power with 60 °C P _{KW} [W]	Max. displacement with 2200 rpm ΔK _r [mm]	Perm. angular displacement with 2200 rpm ΔK _w [°]	Radial spring stiffness C _r [N/mm]	Mass moment of inertia [kgm ²]		Max. perm. operating speed n _{max} [rpm]	
							J _A	J _L		
30	65	3750	25	0.5	1	1150	6 1/2"	0.0038	6000	
	70	4875				1500	7 1/2"	0.0057		0.00030
50	65	9000	35	0.5	1	1300	8"	0.0078	6000	
	70	12000				1700	10"	0.0153		0.00120
G50	70	17500	40	0.5	1	1910	7 1/2"	0.0060	6000	
							8"	0.0080		0.00120
65	65	14000	45	0.5	1	1900	10"	0.0238	6000	
	70	18000				2450	11 1/2"	0.0368		0.00380
75	65	34000	80	0.5	1	1850	10"	0.0272	6000	
	70	42000				2400	11 1/2"	0.0402		0.01450

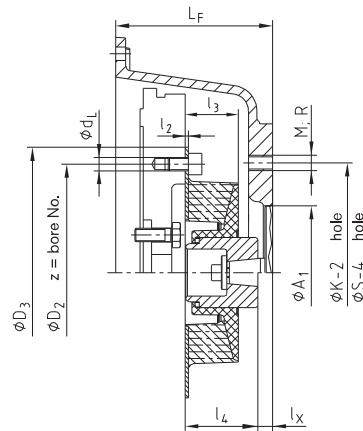
MONOLASTIC®

One-piece, flexible flange couplings

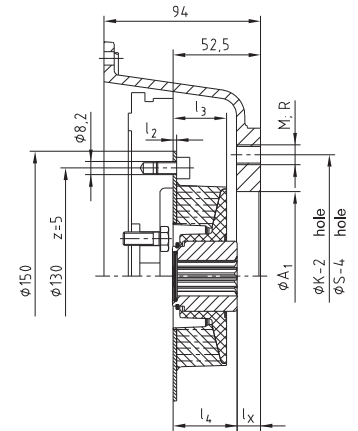
Examples of installation for type with 3 holes (EP 0853203/U.S. Patent 6,117,017)



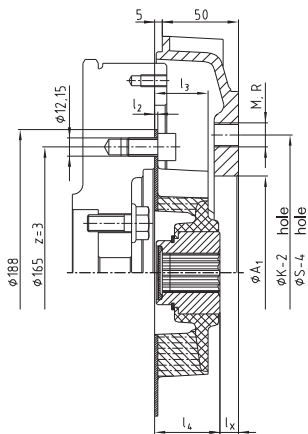
MONOLASTIC® 28
with spline shaft



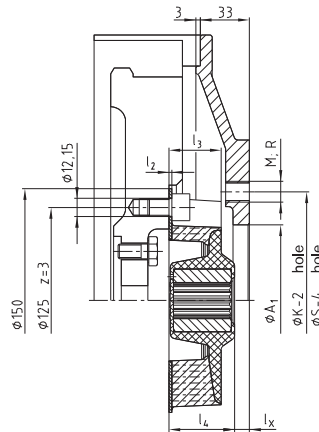
MONOLASTIC® 28
with taper shaft



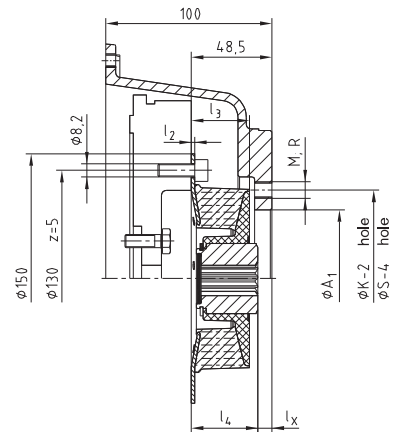
MONOLASTIC® 28
KUBOTA - Mini



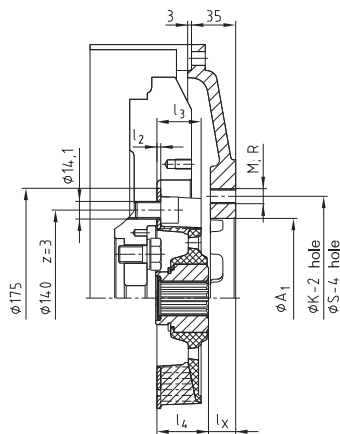
MONOLASTIC® 32 - 188
KUBOTA Super Three Series



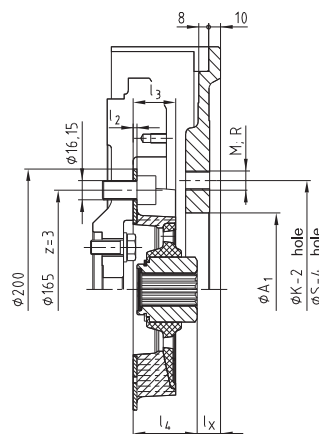
MONOLASTIC® 32 S



MONOLASTIC® 28
KUBOTA Super Mini



MONOLASTIC® 50 - 140

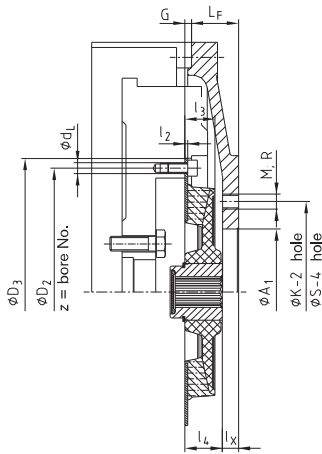


MONOLASTIC® 50 - 165

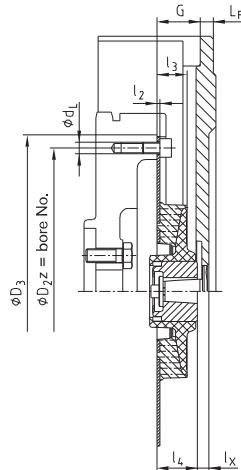
MONOLASTIC®

One-piece, flexible flange couplings

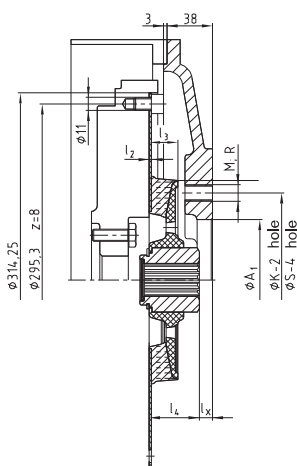
Examples of installation for SAE type (EP 0853203/U.S. Patent 6,117,017)



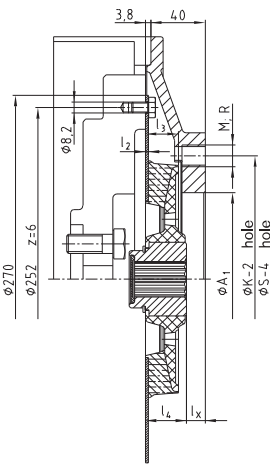
MONOLASTIC® 30
with spline shaft



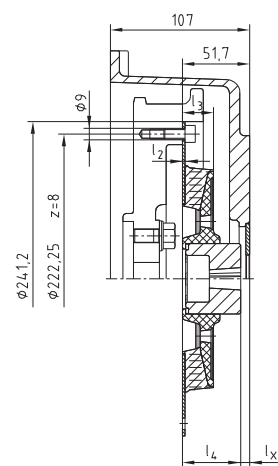
MONOLASTIC® 30
with taper shaft



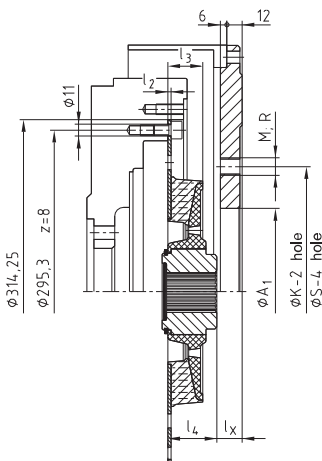
MONOLASTIC® 50 - 10⁴



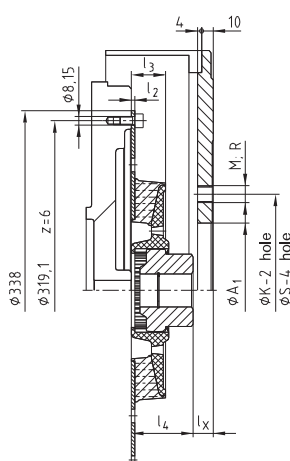
MONOLASTIC® 50 - 270
KUBOTA engine
D1803, V2403, V2403T



MONOLASTIC® 50
Perkins engine
403-13/403-15



MONOLASTIC® 65 - 10⁴



MONOLASTIC® 65 / T48

BoWex® FLE-PA/-PAC

MONOLASTIC®

Flange couplings

BoWex-ELASTIC®